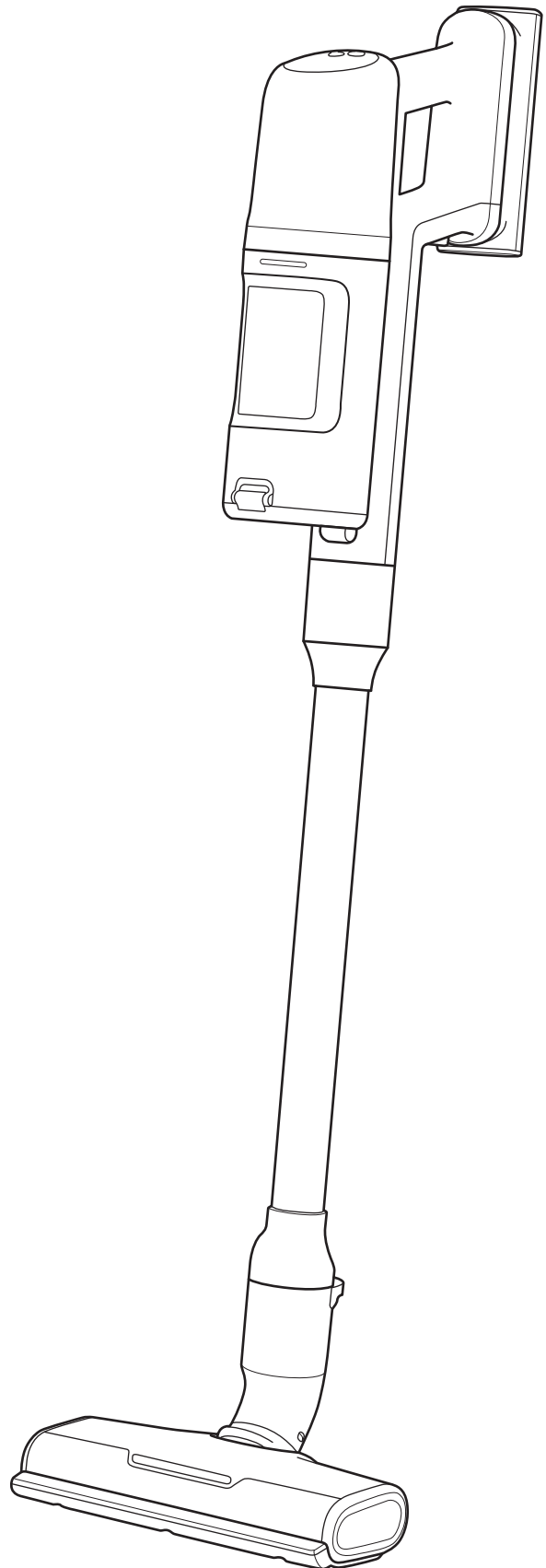


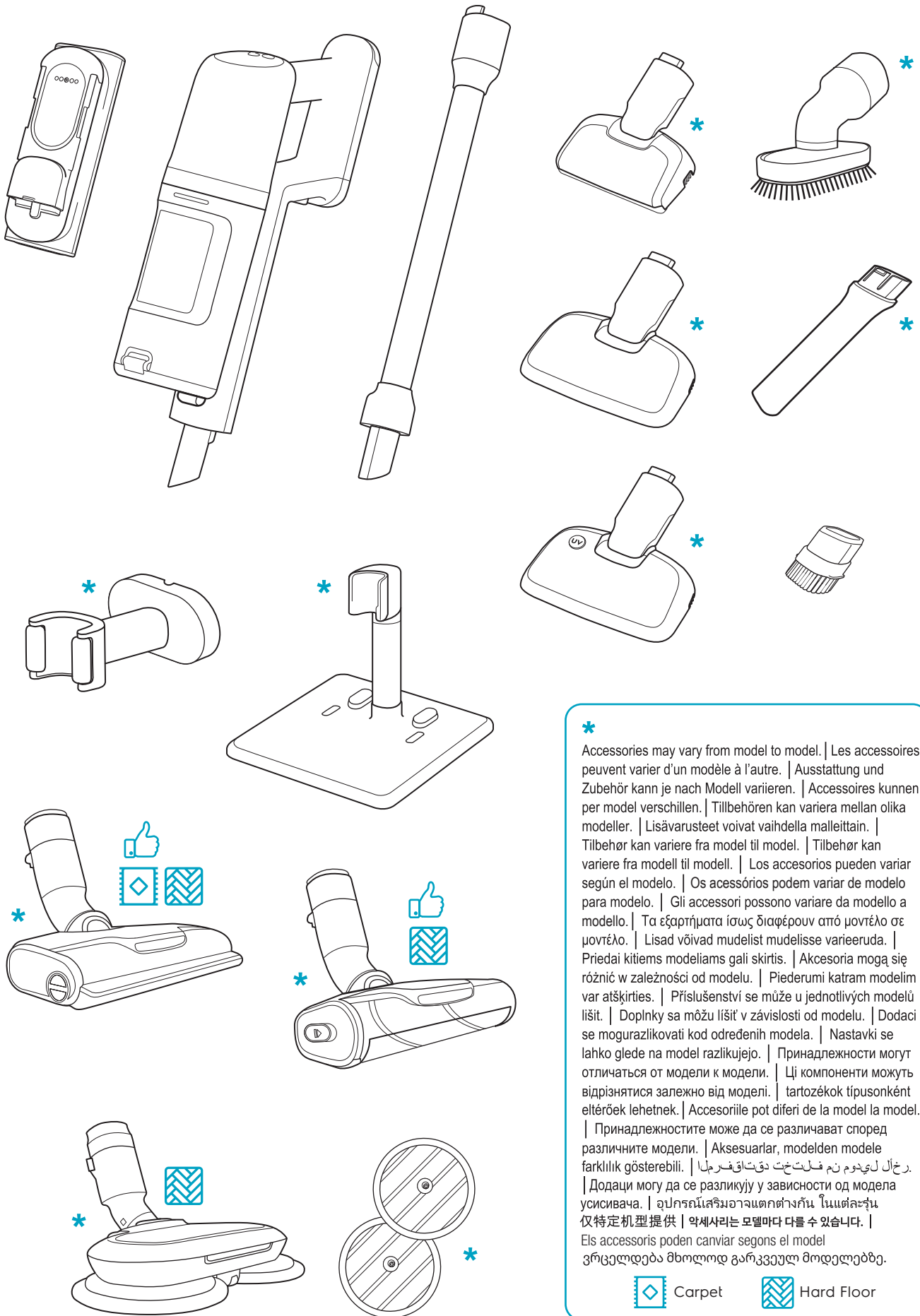


**Electrolux**

Instruction Book

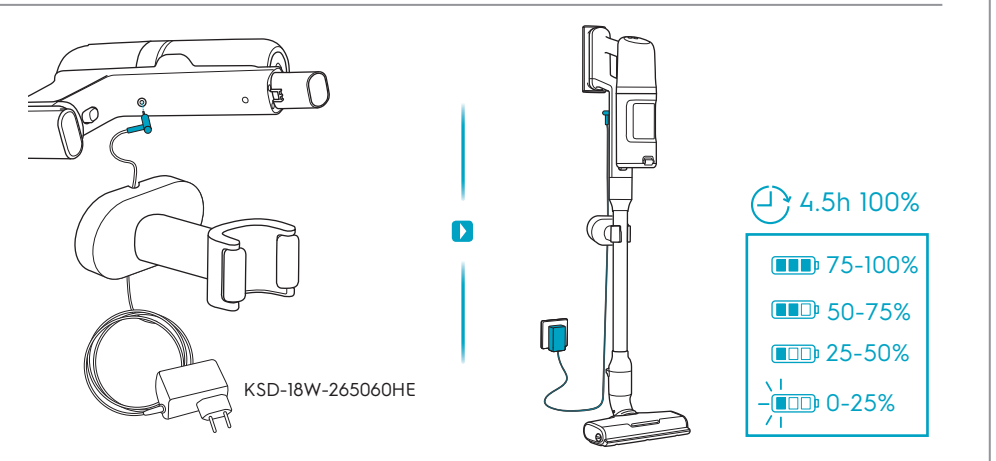
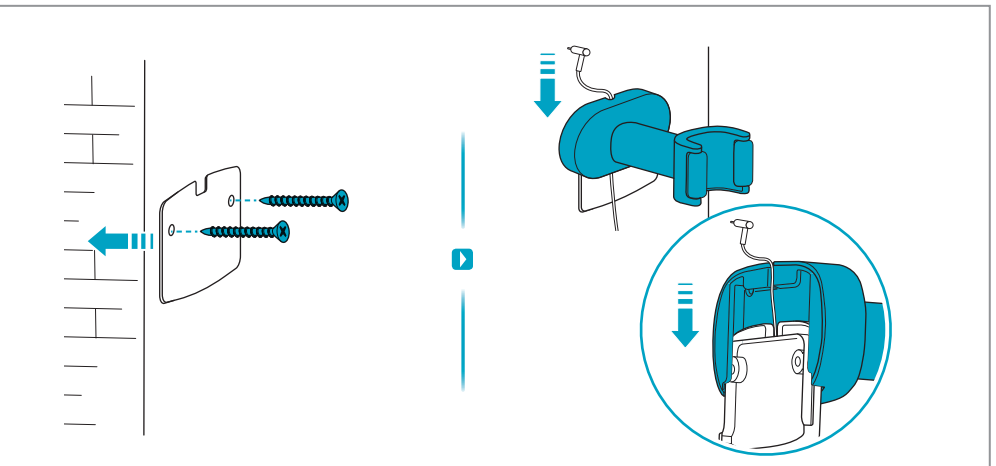
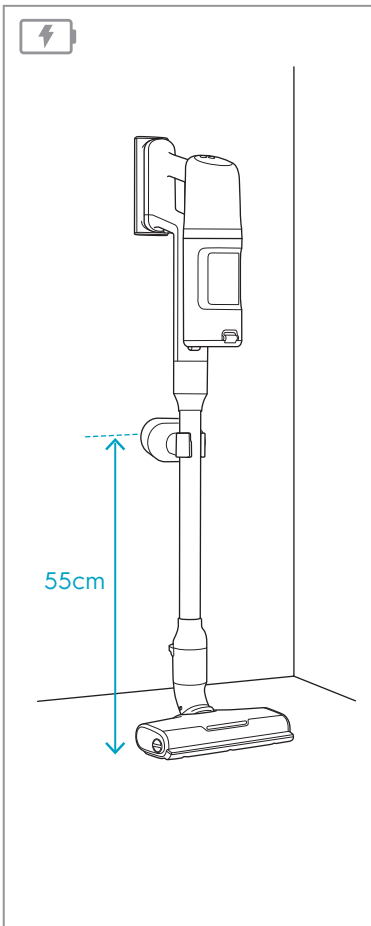
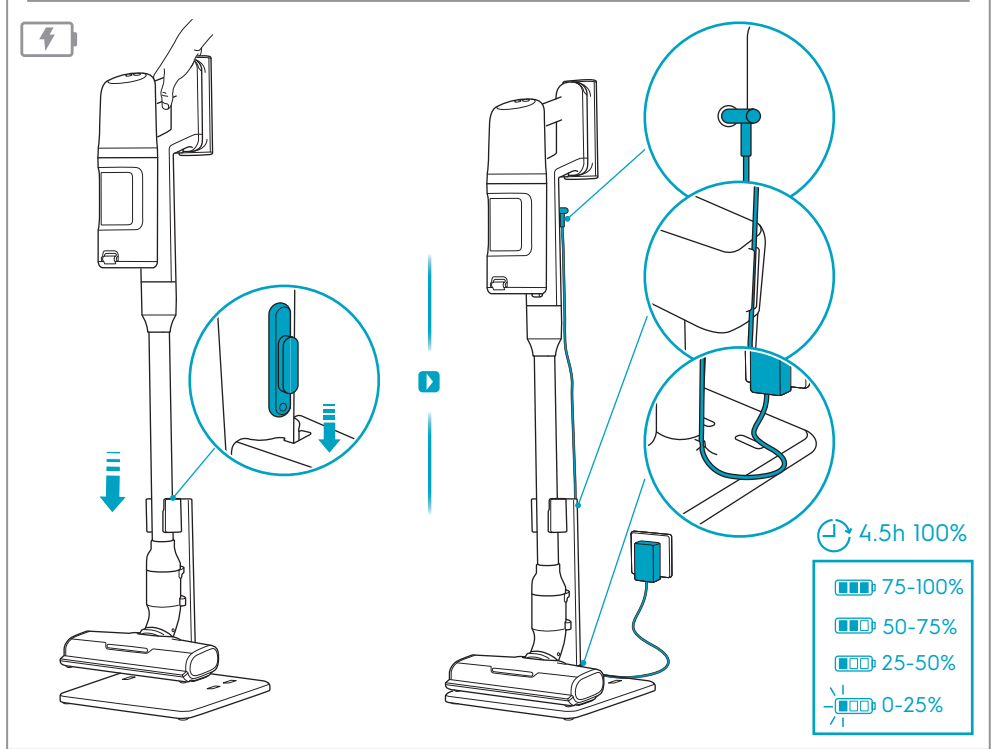
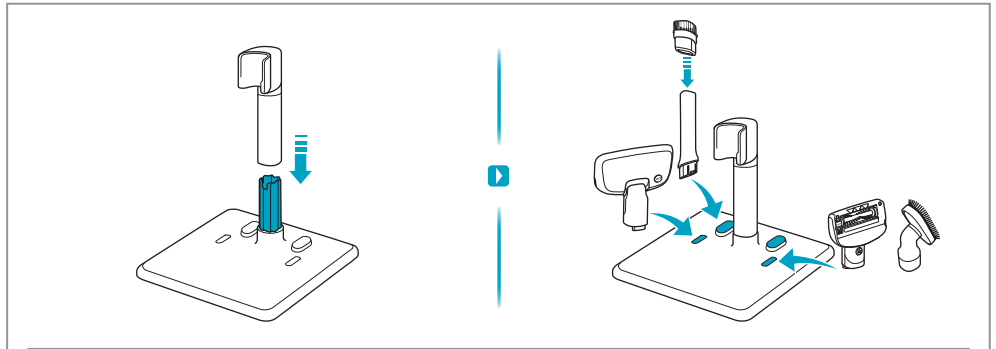
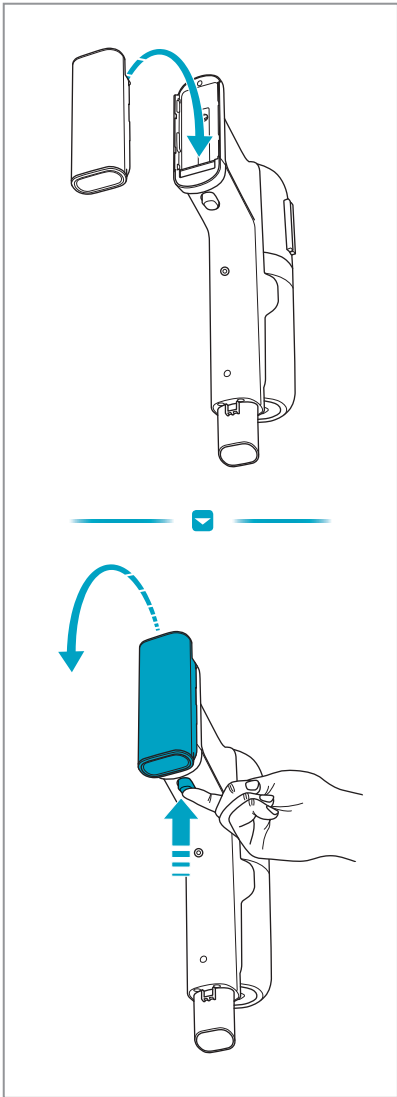
**600 CORDLESS CLEANER**

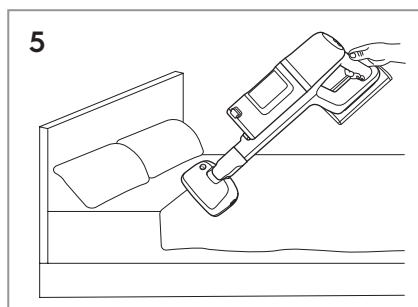
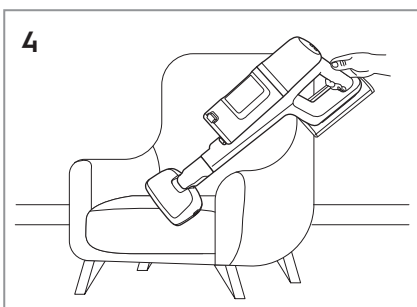
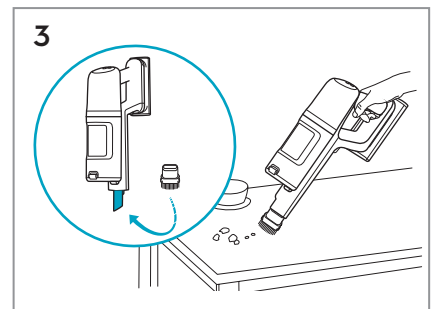
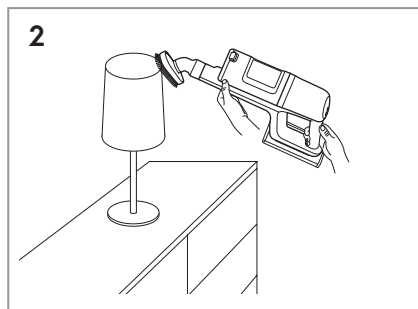
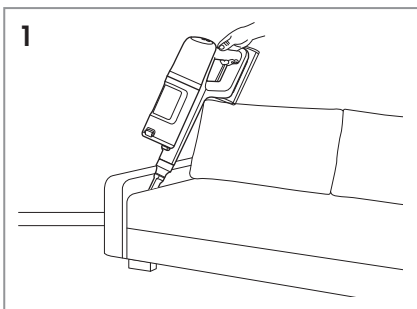
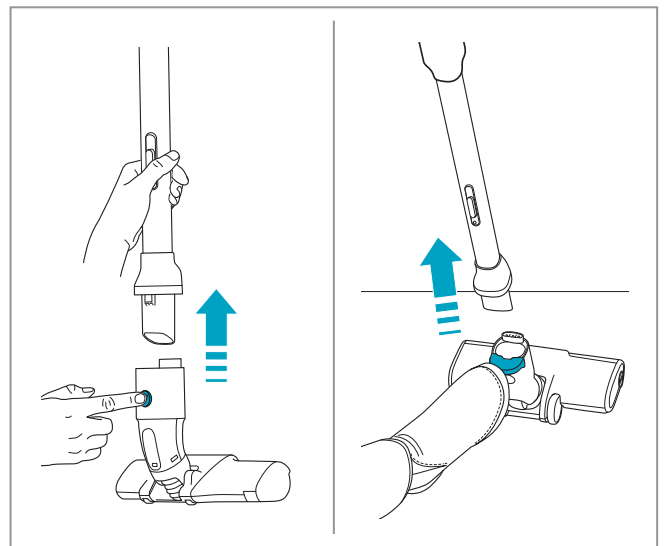
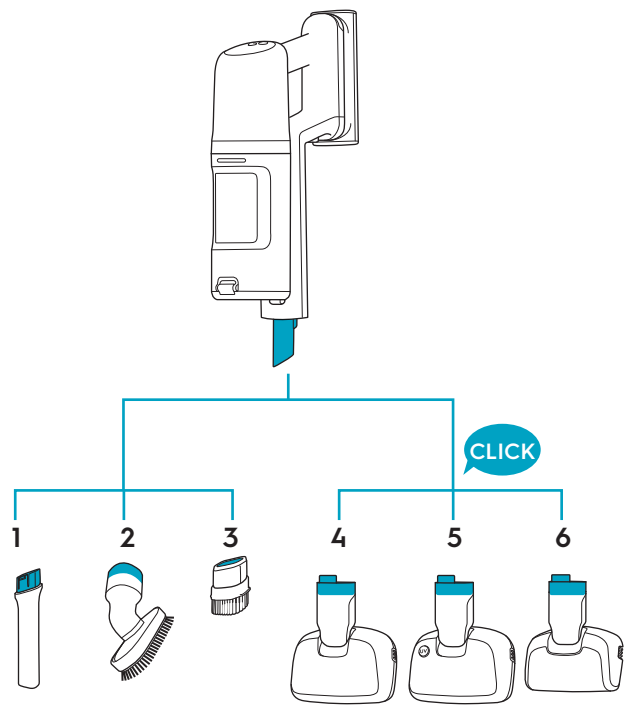
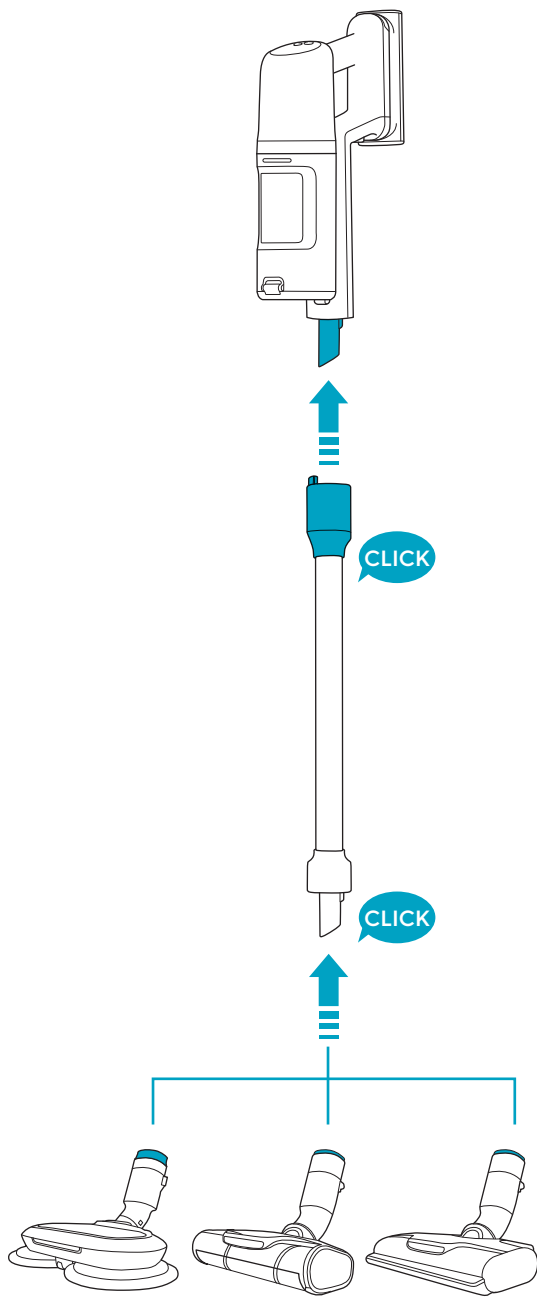


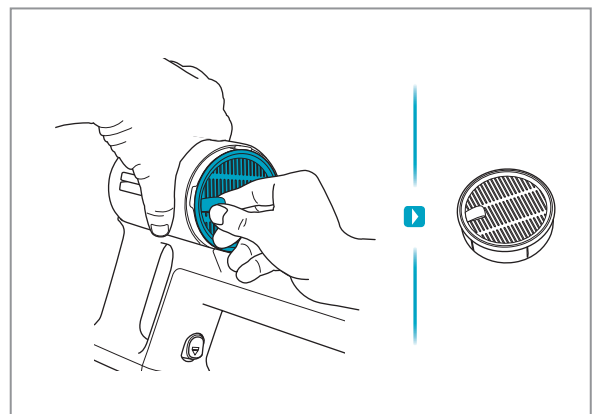
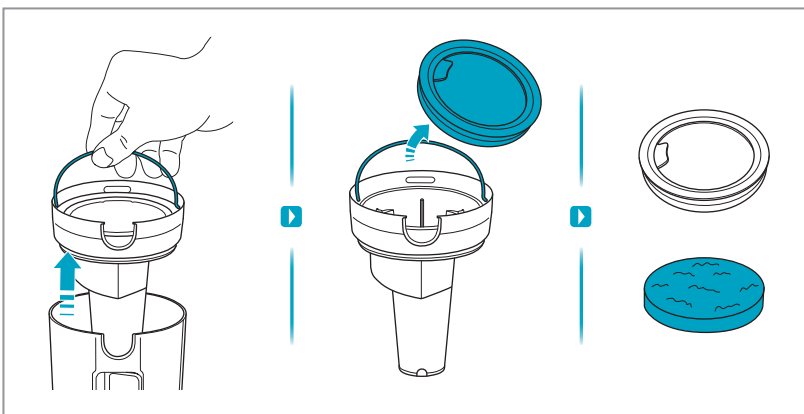
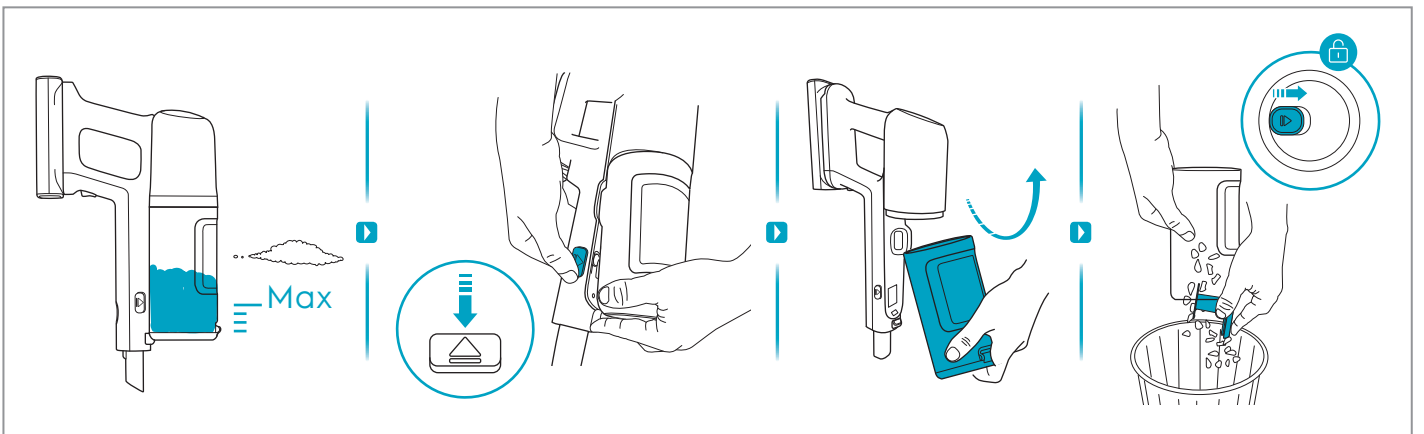
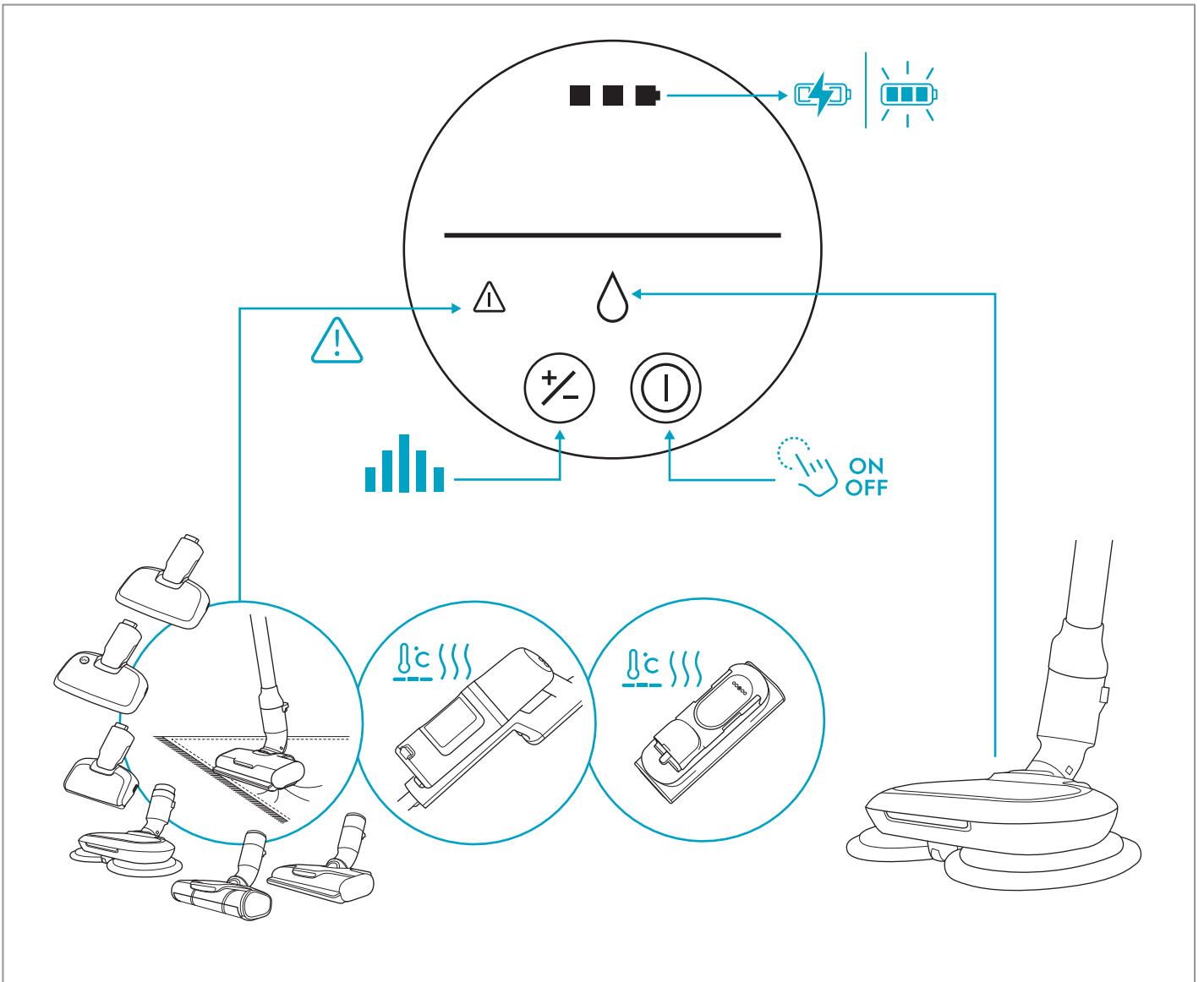


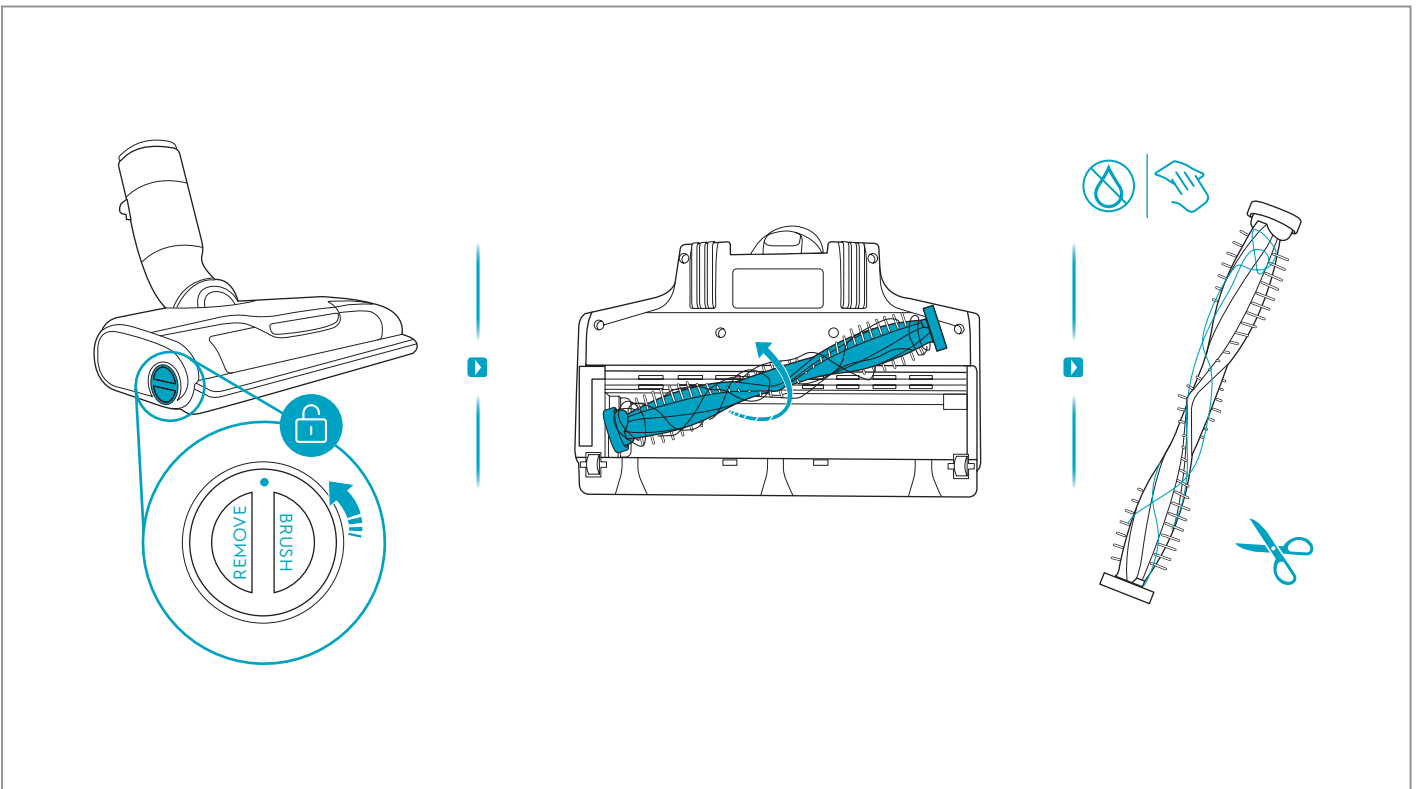
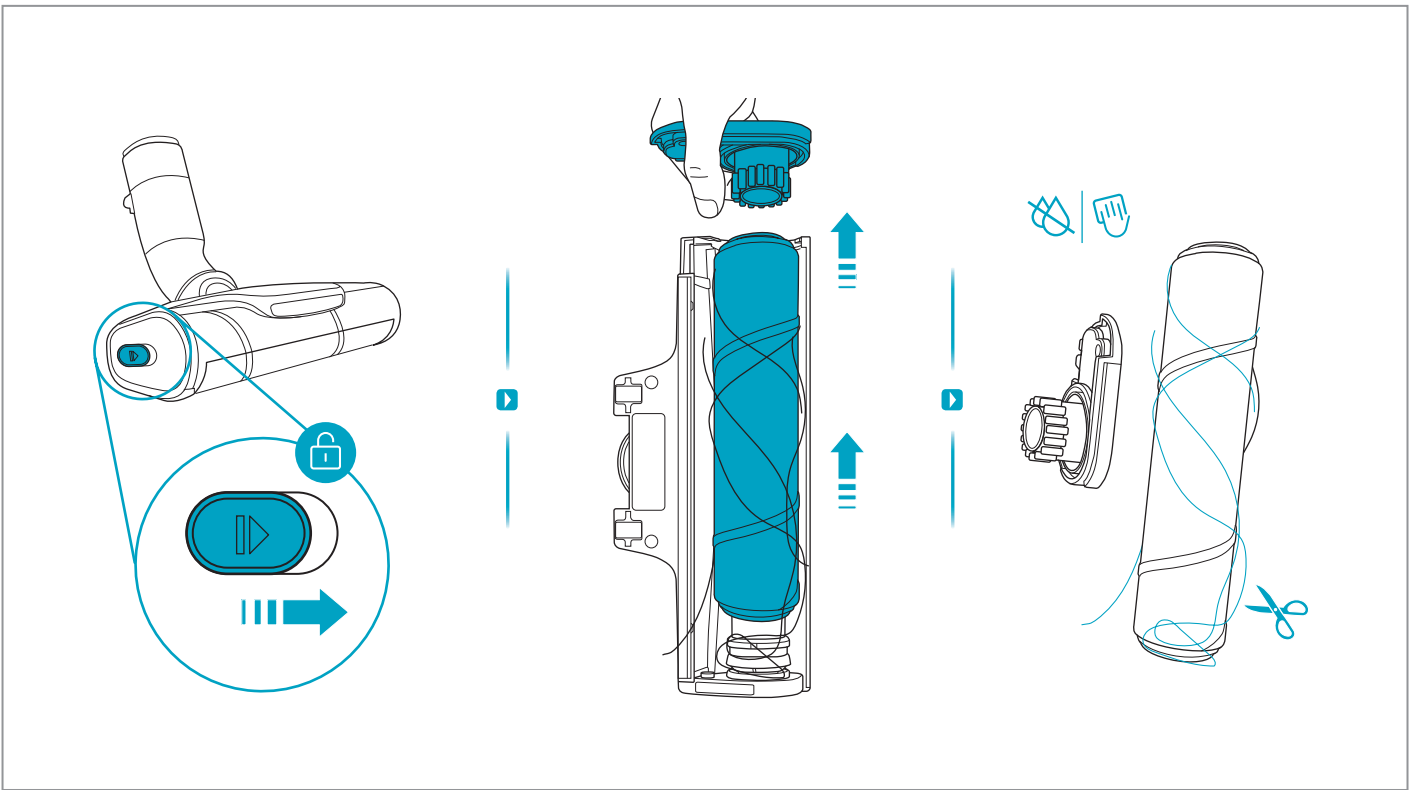
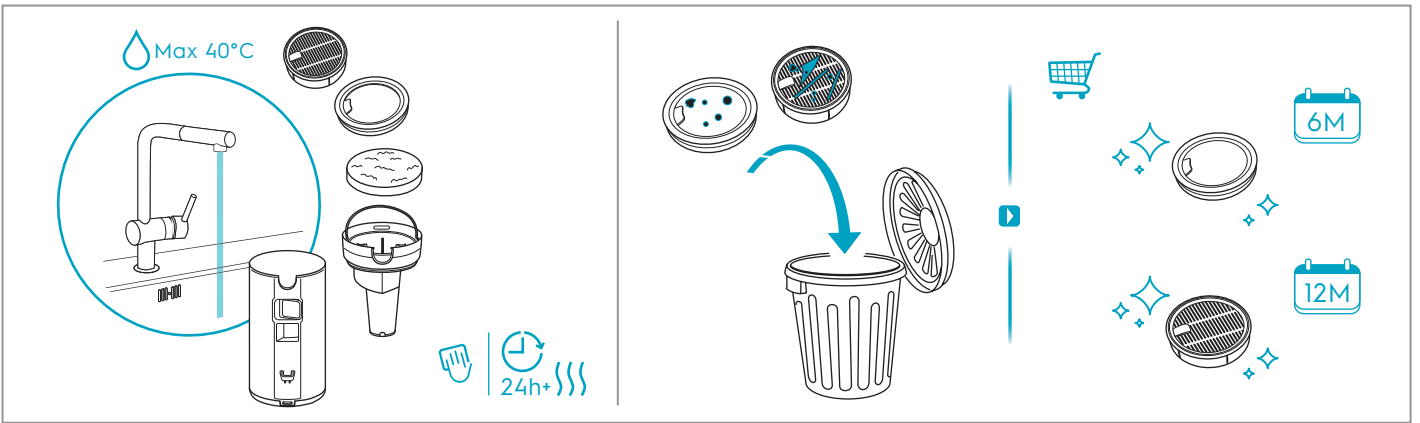
\*  
 Accessories may vary from model to model. | Les accessoires peuvent varier d'un modèle à l'autre. | Ausstattung und Zubehör kann je nach Modell variieren. | Accessoires kunnen per model verschillen. | Tillbehören kan variera mellan olika modeller. | Lisävarusteet voivat vaihdella malleittain. | Tilbehør kan variere fra modell til modell. | Tilbehør kan variere fra modell til modell. | Los accesorios pueden variar según el modelo. | Os acessórios podem variar de modelo para modelo. | Gli accessori possono variare da modello a modello. | Τα εξαρτήματα ίσως διαφέρουν από μοντέλο σε μοντέλο. | Lisad võivad mudelist mudelisse varieeruda. | Priedai kitiems modeliams gali skirtis. | Akcesoria mogą się różnić w zależności od modelu. | Piederumi katram modelim var atšķirties. | Příslušenství se může u jednotlivých modelů lišit. | Doplnky sa môžu líšiť v závislosti od modelu. | Dodaci se mogu razlikovati kod određenih modela. | Nastavki se lahko glede na model razlikujejo. | Принадлежности могут отличаться от модели к модели. | Ці компоненти можуть відрізнятися залежно від моделі. | tartozékok típusonként eltérőek lehetnek. | Accesorile pot diferi de la model la model. | Принадлежностите може да се различават според различните модели. | Aksesuarlar, modelden modele farklılık gösterebilir. | رخآل لیڊوم نم فلټخت دقت اقفرملا. | Додаци могу да се разликују у зависности од модела усисивача. | 일부 모델에서만 제공되는 모델별 전용 액세서리만 제공됩니다. | Els accessoris poden canviar segons el model ვრცელდება მხოლოდ გარკვეულ მოდელებზე.

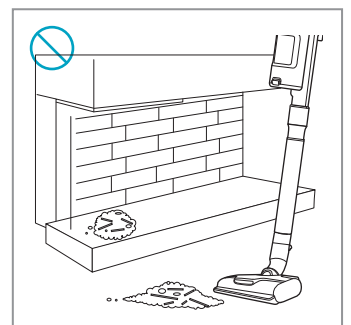
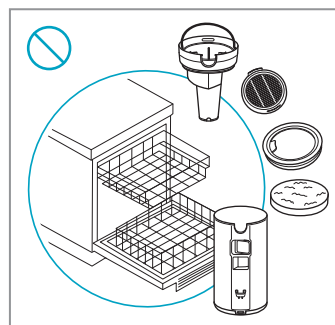
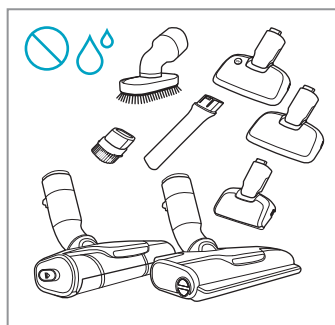
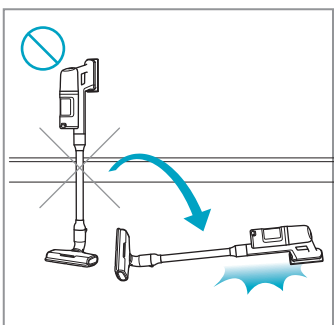
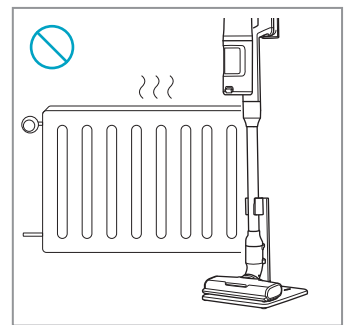
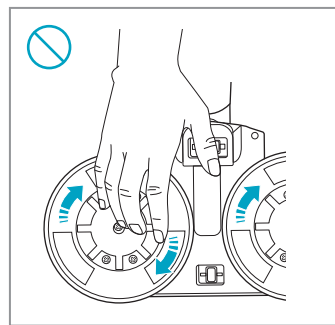
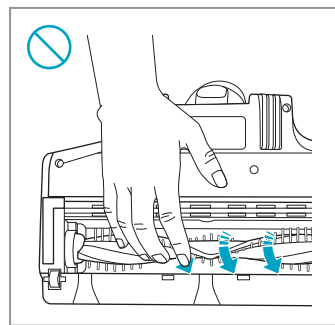
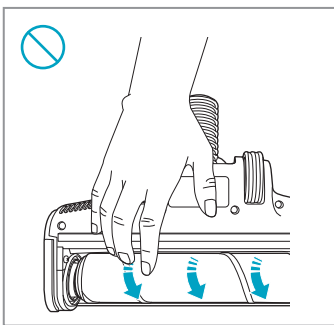
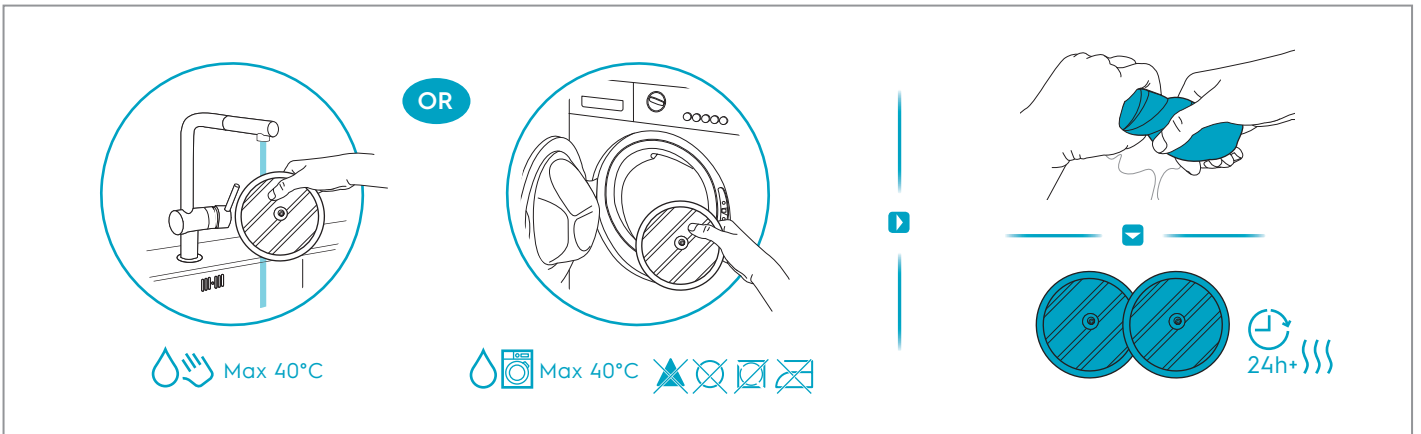
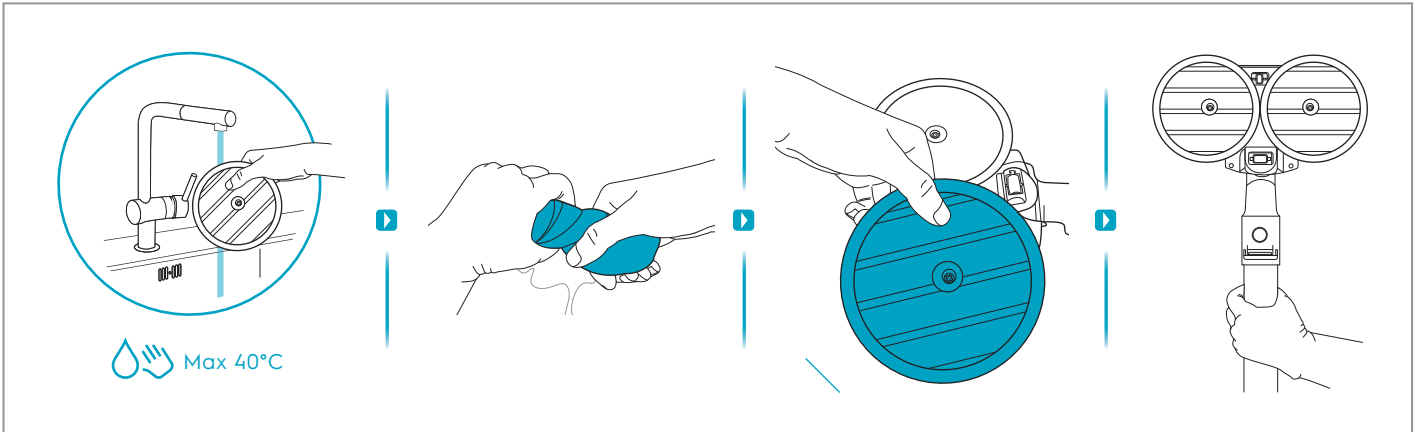
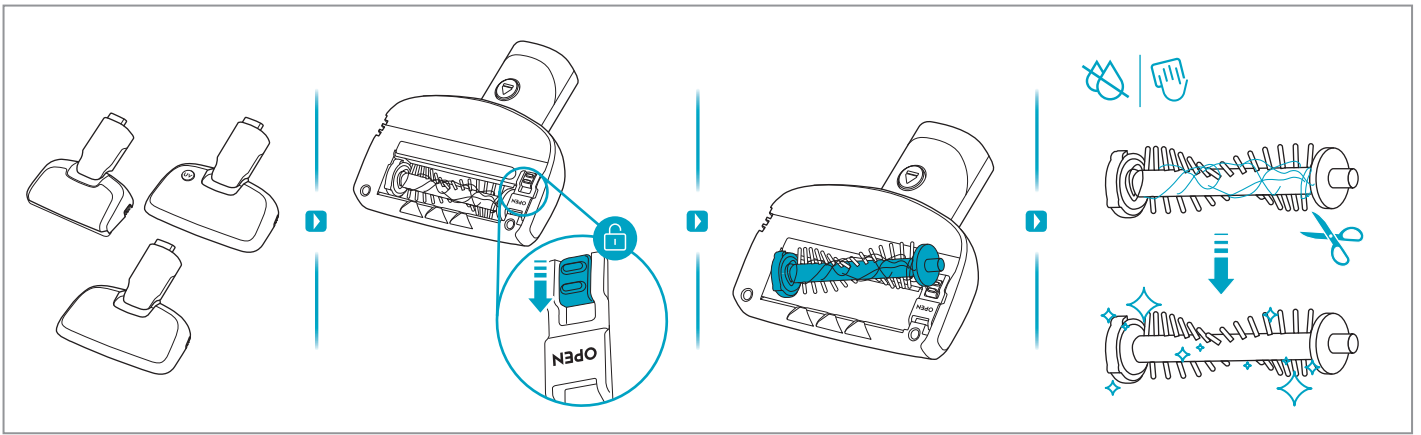


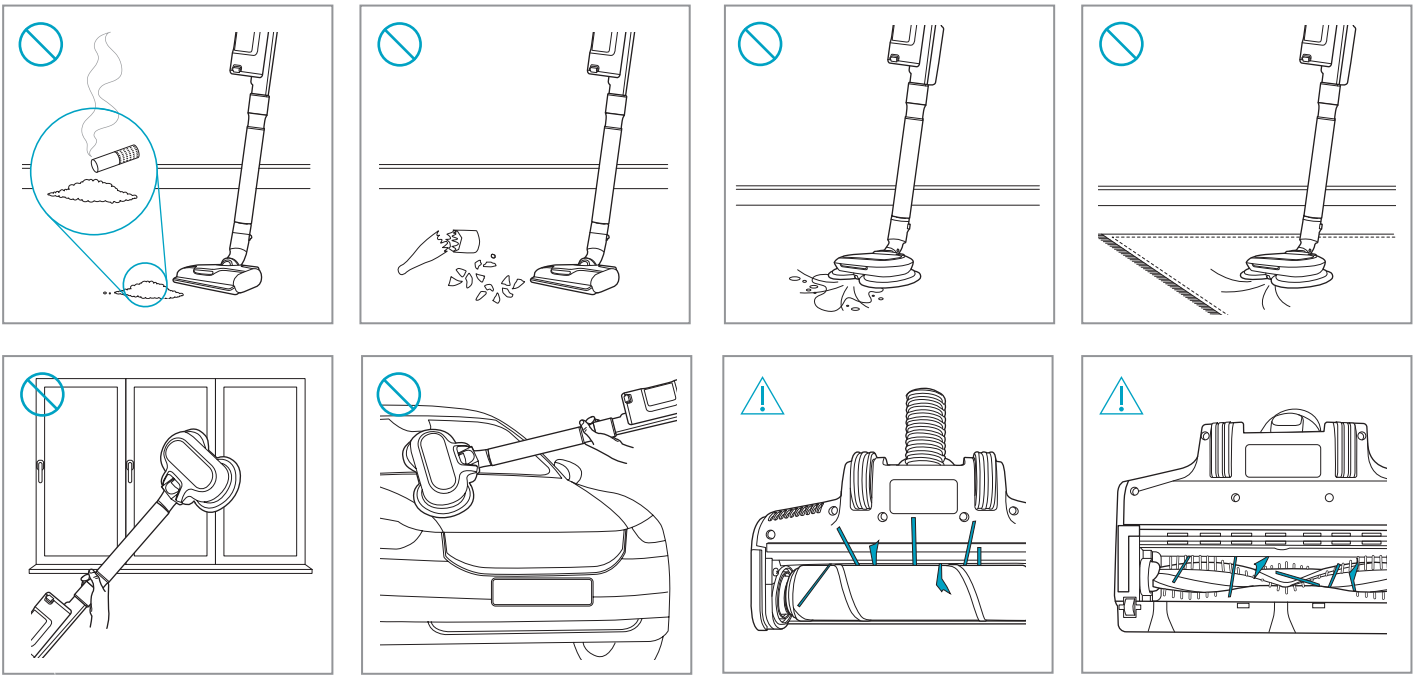




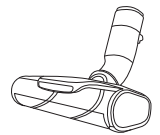
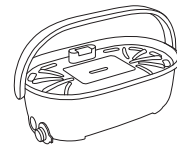
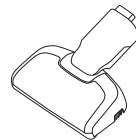




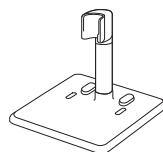
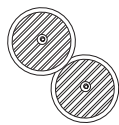
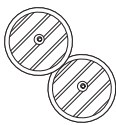




 [www.shop.electrolux.com](http://www.shop.electrolux.com)



<b>ESKW6</b>	<b>KIT23</b>	<b>KIT22</b>	<b>ZE186</b>	<b>ZE182</b>	<b>EPPCS2</b>	<b>ZE156</b>
900 923 742	900 923 383	900 923 354	900 923 768	900 923 764	900 923 550	900 923 369
<b>Yearly Performance Kit</b>	<b>Home and Car Kit</b>	<b>Duster Kit</b>	<b>Extra Battery 2.5Ah/54Wh</b>	<b>PetPro</b>	<b>PowerPro Cleaning Station</b>	<b>PowerPro Hard Floor Nozzle</b>



<b>ZE187</b>	<b>ZE158</b>	<b>ZE159</b>	<b>ZE146</b>	<b>ZE188</b>
900 923 769	900 923 440	900 923 442	900 923 361	900 923 770
<b>PowerPro Mop Nozzle</b>	<b>Standard Pads</b>	<b>Delicate Pads</b>	<b>Duster</b>	<b>Floor Stand</b>

## Troubleshooting

Common Issue	Possible Reason	Solution
The product stops or doesn't start	The battery is empty (The last LED is blinking).	Charge the cleaner.
	Water/Liquid has been sucked into the product.	Stop using the product and take out filters and let it dry for 48h. <b>Do not put the product in the floor stand.</b> If the product is still not working after 48h, contact an authorized Electrolux service center. <b>Note: Damage to the motor caused by water or other liquid is not covered by the warranty.</b>
	Cleaner has fallen onto the floor unintentionally (Do note there is no self stand function for the product).	Hold the hand unit firmly while using the cleaner. Only lean on furniture or similar when stable.
Loss of suction power	Nozzle does not pick up dust or dirt as expected.	Make sure to use a correct nozzle for each floor type. Some models may contain the PowerPro Multi-surface nozzle and/or the PowerPro Hard Floor nozzle. The PowerPro Hard Floor nozzle is not recommended for thick carpets, but it is ideal for hard floors. The PowerPro Multi-surface nozzle is suitable for all floors.
	Nozzle brush or roller is blocked with hair and dirt.	Remove the nozzle and clean the brush roll according to the instruction manual.
	Tube and/or nozzle neck is blocked.	Check if any clogging happened in nozzle/tube.
	Pre-filter and/or fine dust filter have been clogged or are dirty. Dust bin is full.	Empty the dust bin and wash filters according to the instruction manual. If needed, replace and buy new filters at <a href="http://www.electrolux.com">www.electrolux.com</a> .
Product is not charging/ no charging indication on the hand unit display	Charger plug is not plugged in.	Make sure the adaptor plug is connected to the hand unit socket and the charging adaptor is plugged into a wall socket.
	Charging will not occur if the room temperature is below 5°C or over 35°C to protect the battery and electronics.	Store/Charge the product indoors with a room temperature between 5-35°C.
	Hand unit display is dark, and all the LEDs are off after the battery pack is fully charged.	When the product has completed charging, then the display should turn off. Press the +/- speed button to view battery level indication. It should then indicate on all three battery LEDs if the battery is fully charged.
	Battery pack temperature is too high (~45°C)/low (~-5°C), charging not yet started.	Put the product at ambient temperature condition, wait until the temperature cools down/rises up.
Maintenance icon (clogging tube) appears on the hand unit display	Cleaner is experiencing performance loss and needs to be checked.	<ol style="list-style-type: none"> <li>1. Check for clogging in the nozzle or tube.</li> <li>2. Empty the dust bin.</li> <li>3. Clean the filters, pre-filter and fine dust filter.</li> </ol> Clean/Replace the filters according to the instruction manual. Once clogging and maintenance has been checked, the icon will disappear automatically. If in need of replacement, buy new filters at <a href="http://www.electrolux.com">www.electrolux.com</a> .

Common Issue	Possible Reason	Solution
Brush roll doesn't rotate	Hair tangles around the nozzle end cap or brush roll.	Remove the hair on the brush roll and/or its end cap.
	Nozzles run on long hair carpet or similar surfaces, nozzle's over current protection mode has been activated.	1. Adjust the power mode to a lower speed setting. 2. Check and remove if hairs entangle around the brush roll.
Warning triangle appears on the hand unit display	The product may be overheated in the motor or battery pack.	Let the product rest and cool down.
	The nozzle or tube can be clogged.	Check if any clogging happened in the nozzle/tube.
	Nozzles run on long hair carpet or similar surfaces, nozzle's over current protection mode has been activated.	1. Adjust the power mode to a lower speed setting. 2. Check and remove if hairs entangle around the brush roll.
Wet nozzle is wobbling / jumping on floor	Mopping pads are not attached in the center of rotation discs.	Reattach the pads in the center of rotation discs.
Charging is taking longer than 4.5 hours	Room temperature is over 35°C.	Charging time will be longer if the temperature is high, which is normal, store/charge product in a normal room temperature.
	High power mode has been used for an extended period of time causing the battery pack to heat up too much.	Charging will start as soon as the battery pack temperature is below a certain limit.
Headlights on the floor nozzle do not work	Brush roll is jammed.	Remove the brush roll and clean it from hair and fibers.
To avoid battery damage when planning for long time storage without power connected.	The cleaner and battery pack have been stored and not in use for a long time.	To avoid battery damage, make sure to charge the battery pack to 70% before long time storage. Once charged, disconnect the battery pack from the cleaner and keep it in a dry room with a room temperature of 20-25°C.
Performance degradation	After multiple cycles of cleaning long hair, hair became tangled around the metal mesh inside the dust bin.	Remove the metal mesh and manually clear any hair tangled around it.
	After prolonged use, hair and debris accumulated around the dust bin inlet, while the filters became clogged with fine dust.	Remove the hair/rubbish manually and clean or replace the filters as instructed.
The lower lid of dust bin failed to open or close properly.	The lid is blocked by the protrusion when mounted on hand unit.	Press the release button on the side of hand unit and take out the dust bin, then open the lower lid.

